

With its advanced features dedicated to women healthcare and superior image quality, VINNO M50 increases your clinical confidence for all obstetrical, gynecological and breast exams.

- Innovative, cutting-edge volume imaging processing technology
- First class image quality in Ob/Gyn application
- Dedicated obstetrical tool package





## Innovative RF platform [ the first in the world ]

The revolutionary RF platform, The First In The World, removes the need for hardware pre-processing and demodulation of traditional ultrasound platform. This allows all radio frequency signal for computing, which is approximately 40 times of data size than current traditional ultrasound is using, with the advantage of retaining more information and getting more accurate data for post processing. It results in much better image quality in resolution and contrast. This platform also has higher frequency range which can support probe from 1-25MHz.

### » HQ (High Quality) 3D/4D rendering

High quality rendering utilize VINNO innovative processing technology, improves spatial resolution and reduces speckle noise.

### » SRV (super resolution volume)

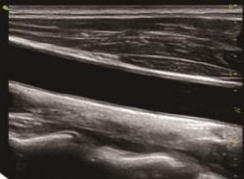
Super resolution volume imaging technology greatly improves contrast resolution. It significantly increase cystic solid lesions diagnostic capability.

### » Mcut (Tomographic display)

MCUT use all scanned volume data to display 2D image in any angle slice and it also allows to display multiple parallel slices for an easier analysis.

### » Auto NT (Auto Nuchal Translucency measurement)

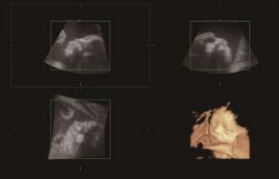
Auto NT automatically detect and report Nuchal Translucency thickness in interest area.



Arterial Intima



Cavity Probing Pregnant Bursa



3D Fetal Face



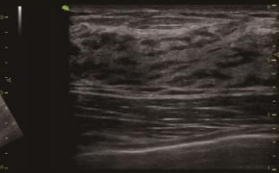
Blood Flow of Liver



4D Fetal Foot



Fetus



Ductal Extension

### » U5-15L probe

52mm footprint, 256 element Xcen technology wideband super high frequency linear probe U5-15L is dedicated for breast application.



- » 18.5 inch high resolution LED monitor
- » 10 inch capacitive touch screen
- » Tissue and Phase inversion harmonic imaging
- » Vfusion - Spatial Compound Imaging
- » Vspeckle - Speckle Reduction Imaging
- » Full screen imaging
- » Auto optimization
- » Auto Trace in PW/CW
- » Excellent triplex performance
- » STIC (Spatio Temporal Image Correlation)
- » Volume calculation tool (VOCAL)



Ginkgo (Ginkgo biloba) is one of the oldest living tree species in the world and its leaves are among the most extensively studied medicinal herbs in use today.

VINNO chose Ginkgo as its company symbol to create continuous innovation and transformation and to constantly provide superior tools for healthcare.

**VINNO Technology (Suzhou) Co., Ltd.**

C8, 218 Xinghu Road, Suzhou Industrial Park, 215123, China

Tel : +86 0512 62873806

Fax : +86 0512 62873801

Email : [vinno@vinno.com](mailto:vinno@vinno.com)

Website : [www.vinno.com](http://www.vinno.com)

VINNO reserve the rights to revise the technical specification if needed.

