

# H9

Vital Signs Monitor

## Features

- > 15" Colour TFT Display, led backlight .
- > Operating Mode Selection: Neonatal/Pediatric/Adult.
- > Visual and Audio alarms, adjustable.
- > Patient management, name and age and id.
- > Network with Central Station Software,
- > Built-in removable and rechargeable lithium battery,
- > easy operating UI with both Keypad menu.
- > Powerful data storage and management, Trend graph, Trend table, etc
- > Arrhythmia analysis and S-T segment analysis.
- > Compatible to Neonatal, Pediatric, Adult Patients

Standard parameters:

3/5-Lead ECG, Hwatime SpO2 , NIBP, RESP, 2-Temp, PR

Optional:

EtCO2 , Touchscreen , Thermal Recorder ,WLAN accessory , Nellcor-SPO2 ,2-IBP Masimo SpO2,Masimo AGM.

# H9

Vital Signs Monitor



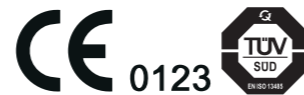
# H9

Vital Signs Monitor

## Hwatime

Hwatime Medical • Make your life better

7/F, Block A, Bofook Jewelry Industry Park, No.33,  
Bulan Rd, Longgang District, Shenzhen City  
Tel: 0086-755-28260108 Fax: 0086-755-85221277  
E-mail: sales@hwatime.com



Handset two-dimensional code

website: [www.hwatime.com](http://www.hwatime.com)

Customer service hotline : 4000 670 888

· Hwatime. All Rights Reserved. The product specifications are subject to change without further notice.

· See instructions for contraindication or precautions

HT-PM-H9-20130528

# H9

## Vital Signs Monitor

# Comprehensive physical signs monitoring



Suitable for ICU/CCU , Operation Room, Postoperative observatory, Emergency room, General ward, etc

### ECG

Number of Leads 3 or 5 leads  
Lead View  
User Slectable:I,II,III,aVR,aVL,aVF,V(5 Lead)  
;I,II or III(3 lead)  
Gain Slection x1/4,x1/2,x1 and x2  
Frequency Response  
Diagnostic:0.05 to 90HZ  
Monitor:0.5 to 35 HZ  
Surgery:1-15HZ  
Calibration Signa 1 (mV p-p), Accuracy : ±5%  
ECG Signal Range ±8 m V ( Vp-p )  
Review Available

### NIBP

Technique Oscillometric during inflation  
Range Adult: 40-270mmHg  
Pediatric: 40-240mmHg  
Neonate: 10-150mmHg  
Measurement cycle <40 sec,typical  
Cycles(Selectable) 2,3,5,10,15,30min 1,2,4hr  
STAT model 5 minutes of continuous reading  
Max Allowable Cuff Presure  
Adult: 300 mmHg  
Pediatric: 240mmHg  
Neonate: 150 mmHg  
Resolution 1mmHg  
Transducer Accuracy ±2mmHg or±2% of reading

### Pulse Oxemetry

Range 0 to 100%  
Resolution 1%  
Accuracy  
70% to 99% range ±2%  
1% to 69%range ±5%  
Method Dual wavelength LED

### Heart(Pulse) Rate

Range Adult 15-300 bpm  
Pediatric 15-350 bpm  
Accuracy ±2bpm or ±3% whichever is greate

### Respiration Rate

Rate: Adult: 0 ~ 120 rpm  
Neo/Ped 0 ~ 150 rpm  
Resolution 1rpm  
Accuracy ± 2 breath/min

### Environment

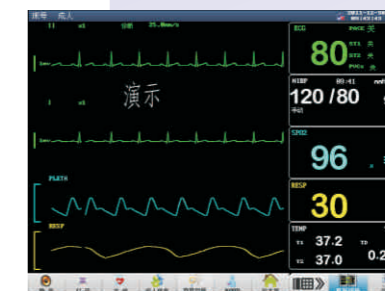
Operating Temperature 59°--95°F ( 15°--35°C )  
Storage Temperature 23°--122°F ( -5°--50°C )  
Humidity 15% to 90%

### Power Requirement

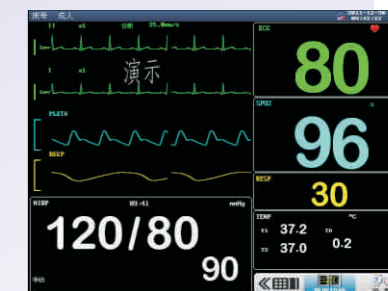
Voltage AC100-240V,50HZ  
Power Consumption 8Watts,typical  
Battery 1 sealed lithium battery  
Battery Life 8hour typical  
Recharge time 4.5 hours

### Trends

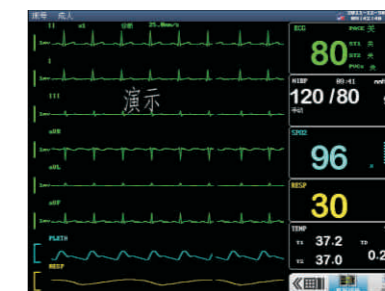
Memory 96 hr at 30 second intervals for a NIBP reading every 5 mintues  
Display tabular;graphical



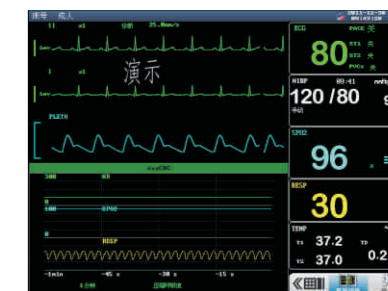
Standard Interface



Max 8 waveform display simultaneously  
max 6 leads ECG waveforms display



OxyCRG interface



Big Font interface



Durable probes connector with high quality



High quality Battery 2.5hours Battery Life



Build in thermal printer



3 level Audible and visual alarming